



ELEVATE
MEDICARE ADVANTAGE
Denver Health Medical Plan Inc.™

ELEVATE MEDICARE CHOICE (HMO D-SNP) 2025 PLAN YEAR

Adams, Arapahoe, Denver and Jefferson Counties

**Health insurance for the
community where we live.**



WHAT'S INSIDE

- » Understanding your Medicare options
- » Medicare Savings Program and Extra Help
 - » How your plan works
 - » Plan specific information

YOUR AGENT INFORMATION

Agent name: _____

Agent phone number: _____

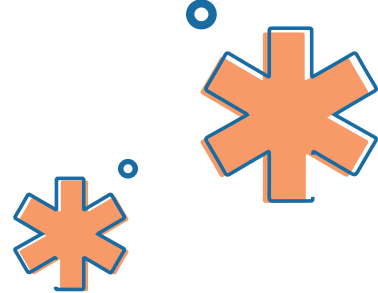
Agent email: _____

LET'S TALK!

Call a licensed sales agent at **303-602-2999**.
They're ready to walk through your options and help you enroll.



Understand your Medicare options



Medicare has four parts:



Part A: This is hospital insurance that covers inpatient hospital and rehabilitation facility care including x-rays, surgeries, and radiation treatment. It also covers skilled nursing facilities, hospice, and home health care. Most people will not pay a premium for Part A.



Part B: This is a medical insurance that covers outpatient hospital, home healthcare, ambulance, doctor visits and preventive services. You may pay a monthly premium for Part B and is usually taken out of your Social Security check.



Part C: This is an alternative to Original Medicare, which we'll discuss below. It covers all of your Part A and B benefits and may cover Part D benefits. These plans may include extra benefits, require you to see in-network doctors or specialists and caps your out-of-pocket spending to protect your finances. You may pay a premium for Part C, and you must keep paying your Part B premium.



Part D: This is a prescription drug plan that covers your prescription drugs. It's often included in your Part C plan or can be purchased separately to go with Original Medicare. You may pay a monthly premium for Part D.

You have two options:

Option 1: Original Medicare

Parts A and B make up Original Medicare and is provided by the Federal Government.

Option 2: Medicare Advantage

These are Part C plans. They cover Part A and B and may cover Part D. They offer benefits at least as good as Original Medicare, but may also include extra benefits like eyewear, hearing, dental, transportation and more!

Compare the difference:

	Original Medicare	Medicare Advantage (Part C)
Doctors and Specialists	You can go to any doctor or hospital that accepts Medicare.	You must use its in-network doctors and hospitals. If it's an emergency, you can go to any hospital or urgent care.
Prescription Drug Coverage	You have to buy a separate Part D plan.	It may include prescription drug coverage so you wouldn't need to buy a separate plan.
Total Out-of-Pocket Costs	You may not have a limit on how much you pay out of pocket each year.	You have a maximum out-of-pocket each year.

Medicare Savings Programs. and Extra Help



There are four different Medicare Savings Programs (MSP) and qualification depends on your income and resource limits:

- » Qualified Medicare Beneficiary (QMB) pays for your Part A premiums, Part B premiums, deductibles and coinsurance
- » Specified Low-Income Medicare Beneficiary (SLMB) pays for your part B premiums only
- » Qualified Individuals-1 (QI-1) pays for your Part B premiums only
- » Qualified Disabled and Working Individuals (QDWI) pays for your Part A premium only

If you want to apply for an MSP, contact your local Department of Human Resources.

Our plans have a \$0 Part D premium.

If you aren't getting Extra Help, you can see if you qualify by calling:

- » **1-800-Medicare** or TTY users call **1-877-486-2048** (24 hours a day/7 days a week)
- » Your State Medicaid Office
- » The Social Security Administration at **1-800-772-1213**. TTY users should call **1-800-325-0778** between 7 a.m. and 7 p.m., Monday through Friday

If you have any questions, please call Health Plan Services at **303-602-2111** or toll free **1-877-956-2111** (TTY users should call 711) from 8 a.m. – 8 p.m., seven days a week.





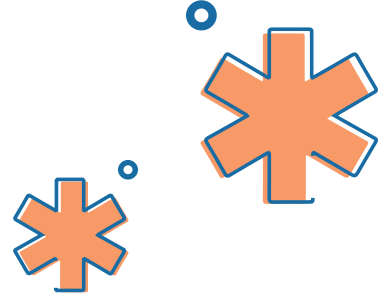
ELEVATE
MEDICARE ADVANTAGE

Denver Health Medical Plan Inc.™

HOW YOUR PLAN WORKS



Flexible options for same-day care



When you need care, it is always best to see your Primary Care Provider (PCP). But if you cannot, your Elevate Medicare Advantage plan offers a variety of flexible options to make sure you have access to the right care at the right time:



NurseLine available 24/7 to provide free medical assistance, care advice and can even prescribe certain medications: 303-739-1261



DispatchHealth makes easy urgent care visits in the comfort of your own home, 8 a.m. – 10 p.m., 365 days a year: 303-500-1518

- Great alternative to crowded waiting rooms and risk of germ exposure
- Same copay as an urgent care center

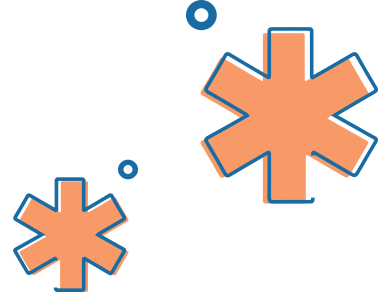


Access to any urgent care center or emergency department in the U.S.

Your health is our highest priority. Easy same-day care is just one of the many ways we're continuously looking to enhance our level of service to you.



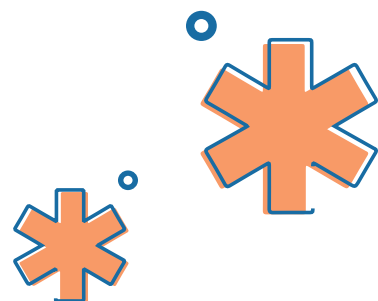
Free rides to doctor appointments



Non-Emergency Medical Transport (NEMT) is a covered benefit for Elevate Medicare Advantage members. You have unlimited roundtrip rides that can be used to visit any plan-approved, health-related location.

- 1. Call at least 48 business hours before your appointment:
1-877-692-5315 (6 a.m. to 9 p.m., 7 days a week)**
- 2. You will receive a call from your driver to confirm the exact pick-up time 24 hours before your appointment**
 - » Please be ready at least 60 minutes prior to your appointment so we can ensure on-time arrival
 - » To cancel a ride or change your ride, call at 1-877-692-5315

Get the most out of your benefits



We are here to listen to you, help answer any questions you have, and help you navigate your benefits. When you have a question about your Elevate Medicare Advantage plan or your benefits, call us. We are specially trained to help you!

We can assist you with things like:

- » Getting appointments with a Primary Care Provider (PCP) or Specialist
- » Knowing where to get care when you need to be seen right away
- » Understanding the provider network and covered benefits
- » Getting the care, tests and treatment you need
- » Helping you fill prescriptions
- » Understanding the costs of prescriptions
- » Understanding dental benefits and how to schedule a dental appointment

HOURS OF OPERATION:

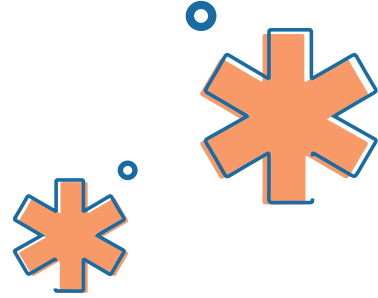
8 a.m. – 8 p.m.
Seven days a week



QUESTIONS ABOUT YOUR PLAN?

303-602-2111

It's easy to get your medications!



You can fill your prescriptions using the following options:



PHARMACY BY MAIL

Denver Health's Pharmacy by Mail is an easy and safe way to get your prescriptions delivered right to your mailbox. Prescriptions must be written by a Denver Health provider.

Ways to sign up for Pharmacy by Mail

1. Through MyChart
 - » Online at **MyChart.DenverHealth.org**
 - » MyChart app for smart phones
 2. Call the pharmacy directly Monday – Friday, 8 a.m. to 5 p.m.: 303-436-4488
- To learn more, visit: **DenverHealthMedicalPlan.org/Denver-Health-Pharmacy-Mail**



HOME DELIVERY

If getting your prescriptions through the mail is not the best option, you can have them delivered to your front door at **no cost to you!** Call 303-436-4488 to set up home delivery. Prescriptions must be written by a Denver Health provider.



100 DAY SUPPLIES OF MAINTENANCE MEDICATIONS

Most medications that you fill on a regular basis can now be filled for 100 day supplies, and there is **no extra cost** compared to 90 day supplies. Ask your health care provider or pharmacy about getting your medications filled for 100 day supplies. Note: controlled substances and specialty medications are not eligible for 100 day supplies.



LEAVING TOWN FOR A WHILE? WE OFFER VACATION SUPPLIES!

If it is too early to refill your medication and you will run out of medication while out of town, we have you covered! You can get an extra supply covered by your DHMP Medicare Advantage plan. How? Two easy steps:

- » Call the Pharmacy team at 303-602-2070 at least one week before you leave.
- » Tell us you need more medication than usual because you will run out while you are out of town.



FILL AT YOUR LOCAL PHARMACY

Of course, you can still have the option to fill at your favorite in-network, local pharmacy if that works best for you.

HOURS OF OPERATION:

8 a.m. to 8 p.m.
Monday - Friday



HAVE QUESTIONS? CALL US AT:

303-602-2111



ELEVATE
MEDICARE ADVANTAGE

Denver Health Medical Plan Inc.™

EXTRA BENEFITS



Get a Health Risk Assessment – and a \$25 Reward!



As a member of Elevate Medicare Choice (HMO D-SNP), you will be assigned a Care Manager and a Health Plan Care Coordinator to help you with your health care goals. Our Care Managers are here to work with you and your doctor to make sure you get the care you need.

In our Care Management Program, we can:

- » Make doctor and specialty appointments
- » Make referrals to resources
- » Help with scheduling transportation to your doctor's appointment
- » Work with your doctor to make sure you have the medicines you need
- » And more!

Complete your Health Risk Assessment (HRA) – Get a \$25 Reward!

You have an opportunity to complete an initial HRA. We want you to be healthy and feel good. By answering the questions on the HRA, we will identify your health risks and try to lower them. Each year, we will ask you to complete an HRA so we know if there were any changes in your health. This will also help us know if you need more help.

Your answers to these questions do not affect your insurance coverage and may be shared with your doctor. We can work with your doctor and health care team to improve your health.

What to expect?

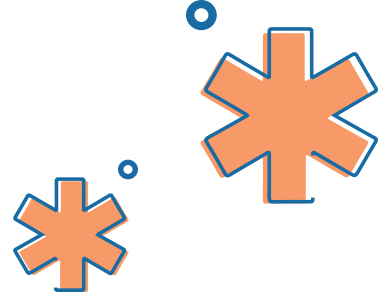
We will mail you an HRA, which will include a link if you prefer to complete it online. You will also receive a welcome letter from your Care Manager and Health Plan Care Coordinator and how to contact us directly. Once we receive your completed HRA by phone or mail, we will add a \$25 reward onto your FlexCard for the purchase of eligible Healthy Food items at participating locations (King Soopers, Safeway, Walmart, Walgreens and CVS).

If you would like to call us to complete your HRA please call **1-833-292-4893**. TTY users should call 711. If you have updated contact information than when you enrolled, please contact us at **303-602-2184** or email us at **DHMPCC@dhha.org**.





FlexCard



One card, four benefits
– automatically loaded onto a reusable card!

You will receive funds on your reloadable card at the beginning of January, April, July and October, or upon enrollment. These funds can be used to help pay for eligible healthy food and over-the-counter (OTC) items at participating stores (King Soopers, Safeway, Walmart, Walgreens and CVS). Funds expire at the end of the quarter or upon disenrollment.

OTC Allowance (All Members Qualify):

Up to \$260 every quarter

Healthy Food Allowance:

Up to \$310 every quarter



Annual Wellness Visit Rewards: \$30 upon completion of a qualifying visit.

An Annual Wellness Visit is a checkup or routine care with your primary provider. If you complete your visit, let us know at [DenverHealthMedicalPlan.org/Medicare-FlexCard](https://denverhealthmedicalplan.org/Medicare-FlexCard). We will load your reward onto your Flexcard for purchase of qualifying healthy food.

Health Risk Assessment: \$25 upon completion of an annual Health Risk Assessment.

Funds are automatically loaded onto your FlexCard for the purchase of qualifying healthy food within 2-4 weeks of the completion of the assessment.

For more information, visit [DenverHealthMedicalPlan.org/Medicare-FlexCard](https://denverhealthmedicalplan.org/Medicare-FlexCard) or call us at **303-602-2111** (TTY 711).



Elevate Your Dental Health!

Oral and overall health are closely connected. That's why regular dental care is so important. As part of your Elevate Medicare Advantage benefits, you have dental coverage through the Delta Dental PPO Medicare network!

Elevate Medicare Choice (HMO D-SNP): Up to \$5,000 Annual Maximum Benefit

The annual maximum benefit is the amount Elevate Medicare Advantage will pay for covered dental services per year.

What's Covered:*



Oral Exams/Cleanings: two per calendar year



Full-Mouth X-Rays: one in 60 months



Fluoride Treatment: one per calendar year



Fillings: one filling per tooth (no limit) per calendar year

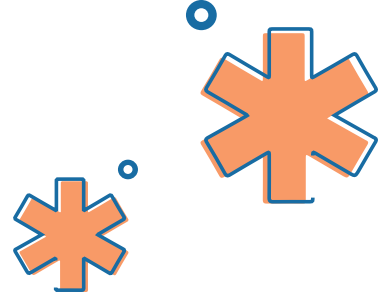
To find an in-network dental provider near you, call Delta Dental at **1-800-610-0201** or visit **DeltaDentalCO.com**.

For more information or questions about your dental benefits, call our Health Plan Services at **303-602-2111** or toll free 1-877-956-2111. TTY users should call 711. Our hours of operation are 8 a.m. to 8 p.m., seven days a week.

You pay \$0 of the procedure cost, up to your annual maximum benefit amount.

*This is only a brief description of services covered. Your Evidence of Coverage will provide a more complete explanation of coverage, including limitations and exclusions.

Vision and Hearing Benefits



As an Elevate Medicare Advantage member, you have vision and hearing services available to you. You can get vision and hearing services at any in-network provider. To find an in-network provider, visit: DenverHealthMedicalPlan.org/Find-Doctor

Vision



Poor eyesight can impact your experience with so many things, such as reading, driving or watching TV. That's why we are focused on helping you! Your benefits include routine vision exams and an annual allowance for eyewear or contact lenses.

Up to \$245 for glasses/contacts per year

Our network includes EyeCare Specialties of Colorado.

To schedule an appointment, call **303-802-4650**.

Hearing



Your hearing is so important to your quality of life. We want you to have the resources you need to take care of your hearing.

Your benefits include:

- » Up to \$1,500 allowance for supplemental hearing aids (both ears combined) every three years
- » Unlimited fitting/evaluation for supplemental hearing aids
- » \$0 copay for one routine hearing exam every three years
- » \$0 copay for fitting/evaluation for hearing aids

For help, more information, or questions about your benefits, call our Health Plan Services at **303-602-2111** or toll free 1-877-956-2111. TTY users should call 711. Our hours of operation are 8 a.m. to 8 p.m., seven days a week.

This is only a brief description of services covered. Your Evidence of Coverage will provide a more complete explanation of coverage, including limitations and exclusions.



FREE RIDES TO DOCTOR APPOINTMENTS!

Non-Emergency Medical Transport (NEMT) is a covered benefit for Elevate Medicare Advantage members. You have **unlimited** roundtrip rides that can be used to visit any plan-approved, health-related location.

HOW IT WORKS:

1. Contact Access2Care at least 48 business hours before your appointment
2. Be ready with the following information:
 - ☐ Name and Address
 - ☐ Member ID
 - ☐ Date of Birth
 - ☐ Phone Number
 - ☐ Appointment Date and Time
 - ☐ Provider Name and Address
 - ☐ Pick-up Address
 - ☐ Cell Phone Number (if available)
 - ☐ Medical Equipment (e.g. wheelchair, walker, etc.)
3. You will receive a call from your driver to confirm the exact pick-up time within 24 hours of your appointment
 - Please be ready at least 60 minutes prior to your appointment to ensure on-time arrival
 - To cancel a ride or change your ride information, call Access2Care or use the app



Call to schedule your ride today! 1-877-692-5315
6 a.m. to 9 p.m., 7 days a week

NEW: Download the Access2Care Mobile App!



Note: If you are having a medical emergency, call 9-1-1 or go to the nearest hospital.

Denver Parks & Recreation Fitness Membership



Having access to a gym gives you access to lots of high-quality equipment and can keep you motivated to stay on track with your fitness goals. Elevate Medicare Advantage offers a yearly membership to Denver Parks and Recreation Centers, at no cost to you.

How to get started

Take your Elevate Medicare Advantage member ID card and a photo identification to your local Denver Parks and Recreation Center.

For a list of all 30 locations, or for more information, visit:

[DenverGov.org/Recreation](https://denvergov.org/recreation)

If you have any questions, please contact Health Plan Services at 303-602-2111 or toll free 1-877-956-2111. TTY users call 711. Our hours of operation are 8 a.m. – 8 p.m., seven days a week.





Project Angel Heart will help support your recovery

Home delivered meals following discharge for each in-patient or skilled nursing facility stay

How it works

Enrollment in **Elevate Medicare Choice (HMO D-SNP)** qualifies you for 21 nutritious meals after discharge from each inpatient hospital stay or skilled nursing facility admission, at no cost to you.

All meals are delivered to your home and play a role in your recovery. Each meal is made with your health in mind and, when combined with your prescribed treatment, may improve your health and reduce the risk of complications.

Project Angel Heart's high-quality, chef-prepared meals are designed to meet your specific medical and nutritional needs. Entrees are delivered frozen and are easy to reheat in the microwave or oven.

Meals will be delivered by Project Angel Heart within 24-72 hours after referral. The date and time of your deliveries will be based on your location.

Project Angel Heart is a nonprofit organization that partners with healthcare providers, like your Elevate Medicare Choice (HMO D-SNP) Plan, to assist members with their recovery.

To learn more about this benefit and arrange for meal delivery, contact our Care Management Department at 303-602-2184. TTY users should call 711. Hours of operation are 8 a.m. – 5 p.m., Monday through Friday.



ELEVATE
MEDICARE ADVANTAGE

Denver Health Medical Plan Inc.™

ENROLLMENT APPLICATION



Pre-Enrollment Checklist

Before making an enrollment decision, it is important that you fully understand our benefits and rules. If you have any questions, you can call and speak to our Sales Agent at 303-602-2451.

Understanding the Benefits

- ☐ The Evidence of Coverage (EOC) provides a complete list of all coverage and services. It is important to review plan coverage, costs, and benefits before you enroll. Visit denverhealthmedicalplan.org or call 303-602-2451 to view a copy of the EOC.
- ☐ Review the provider directory (or ask your doctor) to make sure the doctors you see now are in the network. If they are not listed, it means you will likely have to select a new doctor.
- ☐ Review the pharmacy directory to make sure the pharmacy you use for any prescription medicine is in the network. If the pharmacy is not listed, you will likely have to select a new pharmacy for your prescriptions.
- ☐ Review the formulary to make sure your drugs are covered.

Understanding Important Rules

- ☐ You must continue to pay your Medicare Part B premium. This premium is normally taken out of your Social Security check each month.
- ☐ Benefits, premiums and/or copayments/co-insurance may change on January 1, 2025.
- ☐ Except in emergency or urgent situations, we do not cover services by out-of-network providers (doctors who are listed in the provider directory).
- ☐ **For Elevate Medicare Choice (HMO D-SNP) only:** This plan is a dual eligible special needs plan (D-SNP). Your ability to enroll will be based on verification that you are entitled to both Medicare and medical assistance from a state plan under Medicaid. To be eligible for this plan, you must be eligible for Medicare and Qualified Medicare Beneficiary (QMB) and/or full Medicaid benefits.

Effect on Current Coverage

- ☐ If you are currently enrolled in a Medicare Advantage plan or Medicare Prescription Drug Plan, your current coverage will end once your new coverage starts. If you have Tricare, your coverage may be affected once your new coverage starts. Please contact Tricare for more information. If you have a Medigap policy or are enrolling in a Medicare Advantage plan, you may want to drop your Medigap policy because you will be paying for coverage you cannot use.

Scope of Appointment Confirmation Form

The Centers for Medicare and Medicaid Services require agents to document the scope of a marketing appointment prior to any face-to-face sales meeting to ensure understanding of what will be discussed between the agent and the Medicare beneficiary (or their authorized representative). All information provided on this form is confidential and should be completed by each person with Medicare or his/her authorized representative.

Please initial below beside the type of product(s) you want the agent to discuss:

- _____ Medicare Health Maintenance Organization (HMO) – A Medicare Advantage Plan that provides all Original Medicare Part A and Part B health coverage and sometimes covers Part D Prescription Drug coverage. In most HMO's, you can only get your care from doctors or hospitals in the plan's network (except in emergencies).
- _____ Medicare Special Needs Plan (SNP) – Medicare Advantage Plan that has a benefit package for people with special health care needs. Examples of specific groups served include people who have both Medicare and Medicaid, people who reside in nursing homes, and people who have certain chronic medical conditions.

By signing this form, you agree to a meeting with a sales agent to discuss the types of product you initialed above. Please note, the person who will discuss the products is either employed or contracted by a Medicare plan. They do not work directly for the Federal government. This individual may also be paid based on your enrollment in a plan.

Signing this form does NOT obligate you to enroll in a plan, affect your current enrollment or enroll you in a Medicare plan.

Beneficiary or Authorized Representative Signature and Signature Date

Signature _____ Date _____

If you are the authorized representative, please sign above and print below:

Representative Name _____

Your Relationship to the beneficiary _____

TO BE COMPLETED BY AGENT **All Fields are Required**	
Agent Name:	Agent Phone:
Beneficiary Name:	Beneficiary Phone:
Beneficiary Address:	
Initial Method of Contact (i.e. telephonic, walk in, etc.)	Product Type Discussed:
Agent Signature:	Date of Appointment:

***Scope of Appointment Documentation is subject to CMS record retention requirements**

Agent, if the form was signed by the beneficiary at time of appointment, provide explanation why SOA was not documented prior to meeting.

A new SOA is required if, during the appointment, the beneficiary requests information regarding a different plan type than previously agreed upon.

Elevate Medicare Advantage is a Medicare-approved HMO plan. Enrollment in Elevate Medicare Advantage depends on contract renewal. The plan also has a written agreement with the Colorado Medicaid Program to coordinate your Medicaid.

ATTENTION: If you speak Spanish, language assistance services, free of charge, are available to you. Call 303-602-2111 or 1-877-956-2111 (TTY 711).

ATENCIÓN: Si habla español, tiene a su disposición servicios gratuitos de asistencia lingüística. Para obtener más información llame al 303-602-2111 o al 1-877-956-2111. (Los usuarios de TTY deben llamar a 711).

Exhibit 1: MODEL INDIVIDUAL ENROLLMENT REQUEST FORM TO ENROLL IN A MEDICARE ADVANTAGE PLAN (PART C)

Who can use this form?

People with Medicare who want to join a Medicare Advantage Plan

To join a plan, you must:

- Be a United States citizen or be lawfully present in the U.S.
- Live in the plan's service area

Important: To join a Medicare Advantage Plan, you must also have both:

- Medicare Part A (Hospital Insurance)
- Medicare Part B (Medical Insurance)

When do I use this form?

You can join a plan:

- Between October 15–December 7 each year (for coverage starting January 1)
- Within 3 months of first getting Medicare
- In certain situations where you're allowed to join or switch plans

Visit [Medicare.gov](https://www.Medicare.gov) to learn more about when you can sign up for a plan.

What do I need to complete this form?

- Your Medicare Number (the number on your red, white, and blue Medicare card)
- Your permanent address and phone number

Note: You must complete all items in Section 1. The items in Section 2 are optional — you can't be denied coverage because you don't fill them out.

Reminders:

- If you want to join a plan during fall open enrollment (October 15–December 7), the plan must get your completed form by December 7.
- Your plan will send you a bill for the plan's premium. You can choose to sign up to have your premium payments deducted from your bank account or your monthly Social Security (or Railroad Retirement Board) benefit.

What happens next?

Send your completed and signed form to:
Elevate Medicare Advantage
777 Bannock St., MC 6000
Denver, CO 80204

Once they process your request to join, they'll contact you.

How do I get help with this form?

Call Elevate Medicare Advantage at 303-602-2451. TTY users can call 711.

Or, call Medicare at 1-800-MEDICARE (1-800-633-4227). TTY users can call 1-877-486-2048.

En español: Llame a Elevate Medicare Advantage al 303-602-2451/TTY 711 o a Medicare gratis al 1-800-633-4227 y oprima el 2 para asistencia en español y un representante estará disponible para asistirle.

Individuals experiencing homelessness

- If you want to join a plan but have no permanent residence, a Post Office Box, an address of a shelter or clinic, or the address where you receive mail (e.g., social security checks) may be considered your permanent residence address.

According to the Paperwork Reduction Act of 1995, no persons are required to respond to a collection of information unless it displays a valid OMB control number. The valid OMB control number for this information collection is 0938-1378. The time required to complete this information is estimated to average 20 minutes per response, including the time to review instructions, search existing data resources, gather the data needed, and complete and review the information collection. If you have any comments concerning the accuracy of the time estimate(s) or suggestions for improving this form, please write to: CMS, 7500 Security Boulevard, Attn: PRA Reports Clearance Officer, Mail Stop C4-26-05, Baltimore, Maryland 21244-1850.

IMPORTANT

Do not send this form or any items with your personal information (such as claims, payments, medical records, etc.) to the PRA Reports Clearance Office. Any items we get that aren't about how to improve this form or its collection burden (outlined in OMB 0938-1378) will be destroyed. It will not be kept, reviewed, or forwarded to the plan. See "What happens next?" on this page to send your completed form to the plan.

OMB No. 0938-1378 Expires: 7/31/2024

Section 1 – All fields on this page are required (unless marked optional)**Select the plan you want to join:**☐ Elevate Medicare Choice (HMO D-SNP) – \$0 per month ☐ Elevate Medicare Select (HMO)– \$0 per month

FIRST name: LAST name: [Optional: Middle Initial]:

Birth date: (MM/DD/YYYY)
(/ /)Sex:
☐ Male ☐ FemalePhone number:
()

Permanent Residence street address (Don't enter a PO Box):

City: [Optional: County]: State: ZIP Code:

Mailing address, if different from your permanent address (PO Box allowed):

Street address: City: State: ZIP Code:

Your Medicare information:**Medicare Number:**

- - - - - - - - - -

Answer these important questions:

Will you have other prescription drug coverage (like VA, TRICARE) in addition to Elevate Medicare Advantage?

☐ Yes ☐ NoName of other coverage: Member number for this coverage: Group number for this coverage
_____]

Are you enrolled in your state Medicaid program or Qualified Medicare Beneficiary program?

☐ Yes ☐ No If "yes", please provide your Medicaid number: _____**IMPORTANT: Read and sign below:**

- I must keep both Hospital (Part A) and Medical (Part B) to stay in Elevate Medicare Advantage.
- By joining this Medicare Advantage, I acknowledge that Elevate Medicare Advantage will share my information with Medicare, who may use it to track my enrollment, to make payments, and for other purposes allowed by Federal law that authorize the collection of this information (see Privacy Act Statement below). Your response to this form is voluntary. However, failure to respond may affect enrollment in the plan.
- I understand that I can be enrolled in only one MA plan at a time – and that enrollment in this plan will automatically end my enrollment in another MA plan (exceptions apply for MA PFFS, MA MSA plans).
- I understand that when my Elevate Medicare Advantage coverage begins, I must get all of my medical and prescription drug benefits from Elevate Medicare Advantage. Benefits and services provided by Elevate Medicare Advantage and contained in my Elevate Medicare Advantage "Evidence of Coverage" document (also known as a member contract or subscriber agreement) will be covered. Neither Medicare nor Elevate Medicare Advantage will pay for benefits or services that are not covered.
- The information on this enrollment form is correct to the best of my knowledge. I understand that if I intentionally provide false information on this form, I will be disenrolled from the plan.
- I understand that my signature (or the signature of the person legally authorized to act on my behalf) on this application means that I have read and understand the contents of this application. If signed by an authorized representative (as described above), this signature certifies that:
 - 1) This person is authorized under State law to complete this enrollment, and
 - 2) Documentation of this authority is available upon request by Medicare.

Signature:**Today's date:**

If you're the authorized representative, sign above and fill out these fields:

Name:

Address:

Phone number:

Relationship to enrollee:

Section 2 – All fields on this page are optional

Answering these questions is your choice. You can't be denied coverage because you don't fill them out.

Are you Hispanic, Latino/a, or Spanish origin? Select all that apply.

- | | |
|-----------------------------------------------------------------------------|--------------------------------------------------------------------|
| <input type="checkbox"/> No, not of Hispanic, Latino/a, or Spanish origin | <input type="checkbox"/> Yes, Mexican, Mexican American, Chicano/a |
| <input type="checkbox"/> Yes, Puerto Rican | <input type="checkbox"/> Yes, Cuban |
| <input type="checkbox"/> Yes, another Hispanic, Latino/a, or Spanish origin | |
| <input type="checkbox"/> I choose not to answer. | |

What's your race? Select all that apply.

- | | |
|-----------------------------------------------------------|---------------------------------------------------------|
| <input type="checkbox"/> American Indian or Alaska Native | <input type="checkbox"/> Black or African American |
| Asian: | Native Hawaiian and Pacific Islander: |
| <input type="checkbox"/> Asian Indian | <input type="checkbox"/> Guamanian or Chamorro |
| <input type="checkbox"/> Chinese | <input type="checkbox"/> Native Hawaiian |
| <input type="checkbox"/> Filipino | <input type="checkbox"/> Samoan |
| <input type="checkbox"/> Japanese | <input type="checkbox"/> Other Pacific Islander |
| <input type="checkbox"/> Korean | <input type="checkbox"/> White |
| <input type="checkbox"/> Vietnamese | <input type="checkbox"/> I choose not to answer. |
| <input type="checkbox"/> Other Asian | |

Select if you want us to send you information in a language other than English.

- ☐ Spanish

Select one if you want us to send you information in an accessible format.

- ☐ Braille ☐ Large print ☐ Audio CD

Please contact Elevate Medicare Advantage at 303-602-2111 if you need information in an accessible format other than what's listed above. Our hours of operation are 8 a.m. - 8 p.m. seven days a week. TTY users can call 711.

Do you work? ☐ Yes ☐ No

Does your spouse work? ☐ Yes ☐ No

List your Primary Care Physician (PCP), clinic, or health center:

I want to get plan materials via email. E-mail address:

Paying your plan premiums

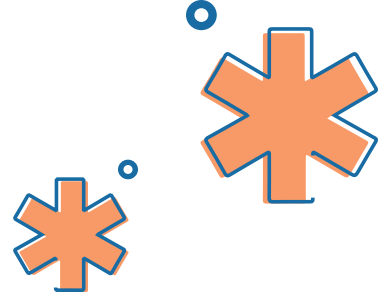
You can pay your monthly plan premium (including any late enrollment penalty that you currently have or may owe) by mail or credit card each month. **You can also choose to pay your premium by having it automatically taken out of your Social Security or Railroad Retirement Board (RRB) benefit each month.**

If you have to pay a Part D-Income Related Monthly Adjustment Amount (Part D-IRMAA), you must pay this extra amount in addition to your plan premium. DON'T pay Elevate Medicare Advantage the Part D-IRMAA.

PRIVACY STATEMENT

The Centers for Medicare & Medicaid Services (CMS) collects information from Medicare plans to track beneficiary enrollment in Medicare Advantage (MA) Plans, improve care, and for the payment of Medicare benefits. Sections 1851 of the Social Security Act and 42 CFR §§ 422.50 and 422.60 authorize the collection of this information. CMS may use, disclose and exchange enrollment data from Medicare beneficiaries as specified in the System of Records Notice (SORN) "Medicare Advantage Prescription Drug (MARx)", System No. 09-70-0588. Your response to this form is voluntary. However, failure to respond may affect enrollment in the plan.

Prescription Drug List Review



Final medication review checklist:

- ☐ Screened enrollee for Low Income Subsidy (if applicable)
- ☐ Reviewed current Low Income Subsidy level with enrollee (if applicable)
- ☐ Reviewed formulary status of enrollee's medication(s)
(submit a Prior Authorization if applicable)
- ☐ Reviewed formulary medication restrictions (if applicable)
- ☐ Reviewed medication cost (Brand/Generic/Day Supply)
- ☐ Referred to Elevate Medicare Advantage Pharmacy Dept. for further evaluation

Member Signature: _____

Date: _____

Agent Signature: _____

Date: _____

Formulary Link:

[DenverHealthMedicalPlan.org/Elevate-Medicare-Advantage-Formularies](https://denverhealthmedicalplan.org/elevate-medicare-advantage-formularies)

Elevate Medicare Advantage Prescription Drug List Review

[illegible]

NEXT STEPS



1 **Schedule an appointment to establish care if you are new to the plan.**

If you're not a new member, be sure to schedule your annual check-up or routine care visit with your Primary Care Provider (PCP).

Stay up-to-date on your preventive care:

- » Annual wellness check-up
- » Immunizations
- » Preventive screenings

PRO TIPS:

- » When you visit your PCP for an annual check-up or routine care visit, it is a great time to also discuss chronic issues such as high blood pressure, diabetes, etc.
- » Take advantage of our reward program for completing your visit! For more information, please refer to the Evidence of Coverage or call Health Plan Services at 303-602-2111.
- » If you need help getting to your appointment, call to schedule a free round-trip ride as part of your benefits!



2 **Set up your medications.**

As an Elevate Medicare Advantage member, you have multiple ways to fill your medications.

- » Pharmacy by Mail
- » Home Delivery
- » 100-Day Supply
- » Vacation Supplies

PRO TIP:

Ask your PCP for a 100-day supply.

3 Schedule an appointment to see the dentist.

It is important to use your dental benefits because your oral health is connected to your overall health. Your dentist can spot early signs of heart disease, diabetes and other diseases. Making preventive dental care a priority by visiting your dentist twice per year can help you avoid painful and costly dental procedures in the future. For help finding an in-network dentist, call **1-800-610-0201** or visit **DeltaDentalCO.com** to find a dentist near you.

PRO TIP:

Your dental benefit allows you to see any provider in the Delta Dental PPO Medicare Advantage Network; Delta Dental has many dentists/dental offices in your area. You can see any dentist within the network at any time.



4 Schedule an appointment to get an eye exam.

As part of your Elevate Medicare Advantage benefits, your 2025 plan benefit covers an annual routine eye exam and includes an allowance for eyewear.

PRO TIPS:

- » To see any in-network 'EyeCare Specialties of Colorado' provider, call 303-802-4650.
- » If you are diabetic, a diabetic eye exam is an important part of preventive care. The exam can:
 - Detect eye damage before pain, visual blurring, or other symptoms occur.
 - Identify eye disease early so effective treatment can begin.
 - Identify physical changes that need to be addressed.



5 Schedule a ride for your medical visits.

If you need help getting to a doctor appointment or pharmacy, you can get unlimited free round-trip rides through your Elevate Medicare Advantage benefits. Call **1-877-692-5315**, from 6 a.m. to 9 p.m., seven days a week to schedule your ride today.

PRO TIP:

Call at least 48 business hours before your appointment.

6 **Receive Your FlexCard.**

Use your FlexCard for qualifying items at King Soopers, Safeway, Walmart, Walgreens and CVS each quarter. Your allowance will be available at the beginning of January, April, July and October, or upon enrollment.

7 **Log in to our Member Portal.**

Register for our member portal, your go-to resource for managing your health insurance plan at any time, any place. With it, you can access important information, member materials (including ID cards), communicate with your health plan, check a claim status and more – all right from your desktop, tablet or smartphone. Scan the QR code below to get started!

SIGN-UP TODAY:

Visit DenverHealthMedicalPlan.org and click on 'MyDHMP Portal' or download the 'MyDHMP' mobile app for iPhone and Android devices!



8 **Log in to your Provider's Patient Portal.**

Your provider network has a portal (such as MyChart) that allows you to connect with them. The portal gives you the option to refill a prescription, make an appointment, view lab results and more!

PRO TIP:

Download the app on your smartphone or tablet!

9 **Member ID card and Quick Reference Guide.**

Be sure to check your mail and keep an eye out for your new Member ID card to arrive.

PRO TIP:

The Quick Reference Guide highlights important plan benefits. Access it online at DenverHealthMedicalPlan.org.

Notice of Non-Discrimination

Denver Health Medical Plan, Inc., hereinafter referred to as the “Company,” complies with applicable Federal civil rights laws and does not discriminate on the basis of race, color, national origin, age, disability, or sex. The Company does not exclude people or treat them differently because of race, color, national origin, age, disability, sex, health status, or need for health care services.

The Company

- Provides free aids and services to people with disabilities to communicate effectively with us, such as:
 - Qualified sign language interpreters
 - Written information in other formats (large print, audio, accessible electronic formats, other formats)
- Provides free language services to people whose primary language is not English, such as:
 - Qualified interpreters
 - Information written in other languages

If you need these services, please contact the Company toll-free at 1-800-700-8140, for TTY please contact 711.

If you believe that the Company failed to provide these services or discriminated in another way on the basis of race, color, national origin, age, disability, sex, health status, or need for health care services, you can file a grievance with the Company’s Grievance and Appeal Department at 938 Bannock Street, Mail Code 6000, Denver, CO 80204, telephone 303-602-2261. You can file a grievance by mail or telephone. If you need help filing a grievance, the Grievance and Appeal Specialist is available to help you.

You can also file a civil right complaint with the U.S. Department of Health and Human Services, Office for Civil Rights, electronically through the Office for Civil Rights Complaint Portal, available at <https://ocrportal.hhs.gov/ocr/portal/lobby.jsf>, or by mail or phone at:

U.S. Department of Health and Human Services
200 Independence Avenue, SW
Room 509F, HHH Building
Washington, D.C. 20201
1-800-368-1019
TDD: 800-537-7697

Complaint forms are available at <http://www.hhs.gov/ocr/office/file/index.html>



**ELEVATE
MEDICARE ADVANTAGE**

Denver Health Medical Plan Inc..

2025 Summary Of Benefits

Elevate Medicare Choice (HMO D-SNP)

H5608-001

January 1, 2025 – December 31, 2025

Need Help?

You may have questions as you read through this document, and that's okay. We're here to help.

**Call 1-877-956-2111
(TTY 711)**

8a.m. – 8p.m., seven days a week.

If you need a complete list of what we cover or any limitations, visit

[DenverHealthMedicalPlan.org](https://denverhealthmedicalplan.org) for a copy of the Evidence of Coverage (EOC) or you may call us to request a copy.



To Join Our Plan, You Must:

- ★ Be eligible for Medicare Parts A and B
- ★ Live in Adams, Arapahoe, Denver, or Jefferson County
- ★ Have full Medicaid or Qualified Medicare Beneficiary (QMB) benefits

Medical: What's Covered and What it Costs

Benefits and Premiums	You Pay
† Your provider must obtain prior authorization from our plan. \$0 cost-sharing is based on your continued enrollment in Medicaid or Qualified Medicare Beneficiary (QMB).	
Monthly Plan Premium You must continue to pay your Medicare Part B premium if you have one.	\$0
Deductible	\$0 copay
Your Maximum Out-of-Pocket Responsibility As long as Medicaid continues to pay your Medicare deductible, coinsurance, and copayments, you will not have a maximum out-of-pocket responsibility.	\$9,250
Inpatient Hospital Coverage† Our plan covers 90 days per benefit period. A benefit period begins the day you are admitted as inpatient and ends when you have not received any inpatient care for 60 days in a row.	\$0 copay †Prior authorization is required for all acute rehabilitation services.
Outpatient Hospital Coverage	\$0 copay
Ambulatory Surgical Center	\$0 copay
Doctor Office Visits	\$0 copay
Preventive Care	\$0 copay
Emergency Care We cover emergency care anywhere in the United States.	\$0 copay
Urgently Needed Services We cover urgently needed care anywhere in the United States.	\$0 copay
Diagnostic Services, Lab and Imaging <ul style="list-style-type: none"> • Medicare-covered diagnostic tests and procedures • X-rays • Medicare-covered labs 	\$0 copay
Hearing Services <ul style="list-style-type: none"> • Exam to diagnose and treat hearing and balance issues • One routine hearing exam every three years • Hearing aid fitting or evaluation exam • Hearing aids 	\$0 copay Covered up to \$1,500 maximum plan coverage amount every 3 years (for both ears combined) for prescription hearing aids.

Benefits and Premiums	You Pay
† Your provider must obtain prior authorization from our plan. \$0 cost-sharing is based on your continued enrollment in Medicaid or Qualified Medicare Beneficiary (QMB).	
Dental Services (Medicare-Covered) Medicare covers some dental services that are closely related to other covered medical services.	\$0 copay for each Medicare-covered medically necessary dental service.
Dental Benefits (Extra Benefits offered by DHMP) Preventive and Comprehensive Dental Coverage <ul style="list-style-type: none"> • Cleanings (up to 2 per calendar year) • Oral exams (up to 2 per calendar year) • Bitewing x-ray (1 set of 4 per calendar year) • Fluoride treatment (1 treatment per year) • Fillings (up to 1 per tooth per calendar year) • See your EOC for additional dental covered services. 	\$0 copay for covered services up to the \$5,000 annual maximum benefit for preventive and dental services every year.
Vision Services <ul style="list-style-type: none"> • Visits to diagnose and treat eye disease and conditions • Supplemental routine eye exam every year • Annual glaucoma screening for people at risk • Contact lenses and/or eyeglasses (frames and lenses) 	\$0 copay for one routine eye exam every year. Up to \$245 for prescription contact lenses and/or eyeglasses (lenses and frames) every year.
Inpatient Services in a Psychiatric Hospital Our plan covers up to 90 days for each benefit period and up to 190 days over your lifetime for inpatient mental health care in a psychiatric hospital.	\$0 copay
Outpatient Mental Health Services Outpatient group and individual therapy	\$0 copay
Skilled Nursing Facility (SNF) Our plan covers up to 100 days per benefit period. A new benefit period begins after 60 days with no readmission for the same condition.	\$0 copay
Outpatient Rehabilitation† <ul style="list-style-type: none"> • Cardiac (Heart) • Pulmonary (Lung) • Occupational Therapy† • Physical Therapy† • Speech Therapy† 	\$0 copay for cardiac, pulmonary, occupational, physical, or speech therapy services. †Prior authorization required after first 30 visits.
Ambulance	\$0 copay
Transportation Unlimited round-trip non-emergent medical transportation to health-related locations.	\$0 copay

Benefits and Premiums	You Pay
† Your provider must obtain prior authorization from our plan. \$0 cost-sharing is based on your continued enrollment in Medicaid or Qualified Medicare Beneficiary (QMB).	
Medicare Part B Drugs†	\$0 copay for Medicare Part B chemotherapy drugs and other Part B drugs. \$0 copay for Medicare Part B insulin drugs. †Authorization may be required for some Part B drugs.

Prescription Drug Coverage

Individuals who are entitled to Medicaid benefits also get *Extra Help* from Medicare to pay for their prescription drug plan costs. Medicare provides *Extra Help* to help pay prescriptions for beneficiaries who have limited income and resources.

Initial Coverage Stage

\$0 copay for all covered drugs during this stage.

Catastrophic Coverage Stage

\$0 copay for all covered drugs during this stage.

For more information, call us at 303-602-2111 or toll-free 1-877-956-2111, call 711 for TTY users, or you can access our **EOC** online.

As a member of Elevate Medicare Choice (HMO D-SNP), you may get your drugs any of the following ways:

- **Retail Pharmacy**
- **Long Term Care (LTC) Pharmacy**
- **Mail Order**

You can get a 30, 60, 90 or 100-day supply of most medications. See the formulary at [DenverHealthMedicalPlan.org](https://denverhealthmedicalplan.org). Contact Health Plan Services at 303-602-2111 or toll-free 1-877-956-2111 if you have questions about how to fill your prescriptions.

Additional Benefits	
Benefits	You Pay
† Your provider must obtain prior authorization from our plan. \$0 cost-sharing is based on your continued enrollment in Medicaid or Qualified Medicare Beneficiary (QMB).	
Blood Pressure Monitor This benefit is part of a special supplemental program for the chronically ill. Not all members qualify.	One blood pressure monitor covered up to \$135 per lifetime for qualified members participating in the Controlling Blood Pressure Program. Must be provided by the plan.

Additional Benefits	
Benefits	You Pay
<p>† Your provider must obtain prior authorization from our plan. \$0 cost-sharing is based on your continued enrollment in Medicaid or Qualified Medicare Beneficiary (QMB).</p>	
<p>Chiropractic Care We cover only manual manipulation of the spine to correct subluxation.</p>	\$0 copay
<p>Denver Parks and Recreation Center Membership We provide an annual membership to the Denver Parks and Recreation Centers. To enroll, take your Elevate Medicare Choice (HMO D-SNP) ID card and a valid photo ID to the recreation center of your choice. Note: this membership does not include the cost to join classes. You may be required to pay a small fee to sign up for fitness classes.</p>	\$0 copay
<p>Diabetes Supplies and Services†</p> <ul style="list-style-type: none"> • therapeutic shoes and inserts • diabetic monitoring supplies • diabetes self-management training 	<p>\$0 copay</p> <p>†TrividiaHealth diabetic testing supplies and Dexcom and certain FreeStyle Libre continuous glucose monitoring systems do not require prior authorization. All other vendors require authorization.</p>
<p>FlexCard: Healthy Food and Over-the-Counter (OTC) We will provide you with quarterly funds that you can use to help pay for covered healthy food and OTC items on a reloadable card. Your allowance is available on your FlexCard at the beginning of each quarter of the plan year (January; April; July and October). Unused funds expire at the end of each quarter or upon disenrollment.</p> <p>Healthy Food Allowance</p> <ul style="list-style-type: none"> • You will receive quarterly funds loaded onto your FlexCard for the purchase of eligible healthy foods. <p>Over-the-Counter Allowance</p> <ul style="list-style-type: none"> • You will receive quarterly funds loaded onto your FlexCard for the purchase of OTC health and wellness products. <p>For more information on eligible items or locations, contact our Health Plan Services at 303-602-2111 or 1-877-956-2111 (TTY 711). Our hours of operation are 8 a.m. – 8 p.m., seven days a week.</p>	<p>You will receive \$2,280 a year:</p> <ul style="list-style-type: none"> • \$310 per quarter for Healthy Food items • \$260 per quarter for Over-the-Counter (OTC) items <p>All members are eligible for the Healthy Food benefit through their continued enrollment in Medicaid or Qualified Medicare Beneficiary (QMB).</p>
<p>Meal Benefit 21 Meals are offered for each Inpatient or Skilled Nursing Facility (SNF) admission (after discharge through Project Angel Heart).</p>	\$0 copay

Summary of Medicaid-Covered Benefits

The benefits listed below are covered by Medicaid and Medicare. For each benefit listed, you can see what Medicaid covers and what our plan covers. If you have questions about your Medicaid eligibility and what benefits you are entitled to, call Health First Colorado – Colorado’s Medicaid Program at 1-800-221-3943. TTY users should call 711.

For more information such as limits, exclusions, and prior authorization rules under fee-for-service Medicaid, you can review the full list at www.healthfirstcolorado.com/benefits-services.

There may be additional copay exclusions for children under the age of 19 and pregnant women. If this may apply to you, you can review the full list of benefits at www.healthfirstcolorado.com/benefits-services.

Benefit Category	Medicaid	Elevate Medicare Choice (HMO D-SNP)
\$0 cost-sharing is based on your continued enrollment in Medicaid or Qualified Medicare Beneficiary (QMB). See your Elevate Medicaid Choice or Health First Colorado (Colorado Medicaid) handbook for referral and prior authorization rules.		
Ambulance	\$0 copay	\$0 copay
Colorectal Cancer Screening	\$0 copay under Elevate Medicaid Choice and Health First Colorado (Colorado Medicaid)	\$0 copay
Dental Services	\$0 copay for cleanings, fillings, root canals, crowns and partial dentures under Elevate Medicaid Choice and Health First Colorado (Colorado Medicaid) No annual dental limit.	\$0 copay for covered services up to \$5,000, the annual maximum benefit for preventive and comprehensive dental services every year.
Diabetes Supplies and Services† <ul style="list-style-type: none"> Diabetes therapeutic shoes or inserts Diabetic supplies Diabetes self-management training 	\$0 copay under Elevate Medicaid Choice and Health First Colorado (Colorado Medicaid)	\$0 copay
Diagnostic Tests, Lab Services and Radiology Services	\$0 copay under Elevate Medicaid Choice and Health First Colorado (Colorado Medicaid)	\$0 copay
Durable Medical Equipment (DME) † Including oxygen	\$0 copay under Elevate Medicaid Choice and Health First Colorado (Colorado Medicaid)	\$0 copay

Benefit Category	Medicaid	Elevate Medicare Choice (HMO D-SNP)
\$0 cost-sharing is based on your continued enrollment in Medicaid or Qualified Medicare Beneficiary (QMB). See your Elevate Medicaid Choice or Health First Colorado (Colorado Medicaid) handbook for referral and prior authorization rules.		
Emergency Care	\$0 copay under Elevate Medicaid Choice and Health First Colorado (Colorado Medicaid), if determined to be an emergency. \$8 per visit if not an emergency under Health First Colorado (Colorado Medicaid)	\$0 copay
Hearing Services <ul style="list-style-type: none"> • Exam to diagnose and treat hearing and balance conditions • Routine hearing exams • Hearing aid fitting or evaluation exam • Hearing aids 	\$0 copay under Elevate Medicaid Choice and Health First Colorado (Colorado Medicaid) Replacement of current cochlear implant if broken/lost. One set of hearing aids every 3-5 years.	\$0 copay for Medicare-covered diagnostic hearing exams. You are covered up to \$1,500 maximum plan coverage amount every 3 years (for both ears combined) for prescription hearing aids.
Home Health Care†	\$0 copay	\$0 copay
Hospice	\$0 copay No more than 9 months.	Covered by Original Medicare.
Immunizations	\$0 copay	\$0 copay
Inpatient Hospital Coverage†	\$0 copay under Elevate Medicaid Choice and Health First Colorado (Colorado Medicaid)	No deductible \$0 copay
Inpatient Services in a Psychiatric Hospital	\$0 copay	No deductible. \$0 copay
Mammograms	\$0 copay	\$0 copay
Outpatient Mental Health	\$0 copay	\$0 copay
Outpatient Rehabilitation <ul style="list-style-type: none"> • Cardiac (Heart) • Pulmonary (Lung) • Physical Therapy† • Occupational Therapy† • Speech Therapy† 	\$0 copay under Elevate Medicaid Choice and Health First Colorado (Colorado Medicaid)	\$0 copay

Benefit Category	Medicaid	Elevate Medicare Choice (HMO D-SNP)
\$0 cost-sharing is based on your continued enrollment in Medicaid or Qualified Medicare Beneficiary (QMB). See your Elevate Medicaid Choice or Health First Colorado (Colorado Medicaid) handbook for referral and prior authorization rules.		
Outpatient Services/Surgery	\$0 copay under Elevate Medicaid Choice and Health First Colorado (Colorado Medicaid)	\$0 copay
Outpatient Substance Abuse	\$0 copay	\$0 copay
Pap Smears	\$0 copay	\$0 copay
Podiatry Services	\$0 copay under Elevate Medicaid Choice	\$0 copay
Prescription Drugs	\$0 copay under Elevate Medicaid Choice for drugs on the formulary and certain OTC drugs prescribed by a Denver Health provider and filled at a Denver Health pharmacy. \$0 copay under Health First Colorado (Colorado Medicaid).	No deductible \$0 copay for all drugs on the formulary.
Preventive Care	\$0 copay	\$0 copay
Primary Care	\$0 copay under Elevate Medicaid Choice and Health First Colorado (Colorado Medicaid)	\$0 copay
Prostate Cancer Screening Exams	\$0 copay	\$0 copay
Prosthetic Devices†	\$0 copay under Elevate Medicaid Choice. \$1 copay per visit under Health First Colorado (Colorado Medicaid)	\$0 copay
Renal Dialysis	\$0 copay under Elevate Medicaid Choice.	\$0 copay
Skilled Nursing Facility (SNF)	\$0 copay	\$0 copay
Specialty Care	\$0 copay under Elevate Medicaid Choice and Health First Colorado (Colorado Medicaid)	\$0 copay
Transportation to Medical Visits	\$0 copay	\$0 copay
Urgently Needed Services	\$0 copay under Elevate Medicaid Choice and Health First Colorado (Colorado Medicaid)	\$0 copay

Benefit Category	Medicaid	Elevate Medicare Choice (HMO D-SNP)
\$0 cost-sharing is based on your continued enrollment in Medicaid or Qualified Medicare Beneficiary (QMB). See your Elevate Medicaid Choice or Health First Colorado (Colorado Medicaid) handbook for referral and prior authorization rules.		
Vision Services	\$0 for eye exams under Elevate Medicaid Choice and Health First Colorado (Colorado Medicaid). One exam per year. Eyeglass coverage only following surgery. No coverage for contact lenses unless medically necessary.	\$0 copay for up to one routine eye exam every year. Up to \$245 for prescription contact lenses and/or eyeglasses (lenses and frames) every year.
X-Rays	\$0 copay under Elevate Medicaid Choice and Health First Colorado (Colorado Medicaid)	\$0 copay

Call Us for Assistance

Call Health Plan Services at 303-602-2111 or toll-free 1-877-956-2111. TTY users should call 711.

Our hours of operation are 8 a.m. to 8 p.m., seven days a week.

This document is available for free in Spanish and other formats such as Braille, large print, or audio.

If you want to know more about the coverage and costs of Original Medicare, look in your current **“Medicare & You”** handbook. View it online at www.medicare.gov or get a copy by calling 1-800-MEDICARE (1-800-633-4227), 24 hours a day, 7 days a week. TTY users should call 1-877-486-2048.

Except in emergency situations, if you use the providers that are not in our network, we may not pay for these services.

Elevate Medicare Advantage is a Medicare-approved HMO plan. Elevate Medicare Advantage depends on contract renewal. The plan also has a written agreement with Health First Colorado – Colorado’s Medicaid Program to coordinate your Medicaid benefits.

Multi-Language Insert

Multi-language Interpreter Services

English: We have free interpreter services to answer any questions you may have about our health or drug plan. To get an interpreter, just call us at 1-877-956-2111. Someone who speaks English/Language can help you. This is a free service.

Spanish: Tenemos servicios de intérprete sin costo alguno para responder cualquier pregunta que pueda tener sobre nuestro plan de salud o medicamentos. Para hablar con un intérprete, por favor llame al 1-877-956-2111. Alguien que hable español le podrá ayudar. Este es un servicio gratuito.

Chinese Mandarin: 我们提供免费的翻译服务，帮助您解答关于健康或药物保险的任何疑问。如果您需要此翻译服务，请致电 1-877-956-2111。我们的中文工作人员很乐意帮助您。这是一项免费服务。

Chinese Cantonese: 您對我們的健康或藥物保險可能存有疑問，為此我們提供免費的翻譯服務。如需翻譯服務，請致電 1-877-956-2111。我們講中文的人員將樂意為您提供幫助。這是一項免費服務。

Tagalog: Mayroon kaming libreng serbisyo sa pagsasaling-wika upang masagot ang anumang mga katanungan ninyo hinggil sa aming planong pangkalusugan o panggamot. Upang makakuha ng tagasaling-wika, tawagan lamang kami sa 1-877-956-2111. Maaari kayong tulungan ng isang nakakapagsalita ng Tagalog. Ito ay libreng serbisyo.

French: Nous proposons des services gratuits d'interprétation pour répondre à toutes vos questions relatives à notre régime de santé ou d'assurance-médicaments. Pour accéder au service d'interprétation, il vous suffit de nous appeler au 1-877-956-2111. Un interlocuteur parlant Français pourra vous aider. Ce service est gratuit.

Vietnamese: Chúng tôi có dịch vụ thông dịch miễn phí để trả lời các câu hỏi về chương sức khỏe và chương trình thuốc men. Nếu quý vị cần thông dịch viên xin gọi 1-877-956-2111 sẽ có nhân viên nói tiếng Việt giúp đỡ quý vị. Đây là dịch vụ miễn phí.

German: Unser kostenloser Dolmetscherservice beantwortet Ihren Fragen zu unserem Gesundheits- und Arzneimittelplan. Unsere Dolmetscher erreichen Sie unter 1-877-956-2111. Man wird Ihnen dort auf Deutsch weiterhelfen. Dieser Service ist kostenlos.

Korean: 당사는 의료 보험 또는 약품 보험에 관한 질문에 대해 드리고자 무료 통역 서비스를 제공하고 있습니다. 통역 서비스를 이용하려면 전화 1-877-956-2111 번으로 문의해 주십시오. 한국어를 하는 담당자가 도와 드릴 것입니다. 이 서비스는 무료로 운영됩니다.

Russian: Если у вас возникнут вопросы относительно страхового или медикаментного плана, вы можете воспользоваться нашими бесплатными услугами переводчиков. Чтобы воспользоваться услугами переводчика, позвоните нам по телефону 1-877-956-2111. Вам окажет помощь сотрудник, который говорит по-русски. Данная услуга бесплатная.

Arabic : إننا نقدم خدمات المترجم الفوري المجانية للإجابة عن أي أسئلة تتعلق بالصحة أو جدول الأدوية لدينا. للحصول على مترجم فوري، ليس عليك سوى الاتصال بنا على 1-877-956-2111. سيقوم شخص ما يتحدث العربية بمساعدتك. هذه خدمة مجانية.

Hindi: हमारे स्वास्थ्य या दवा की योजना के बारे में आपके किसी भी प्रश्न के जवाब देने के लिए हमारे पास मुफ्त दुभाषिया सेवाएँ उपलब्ध हैं.. एक दुभाषिया प्राप्त करने के लिए, बस हमें 1-877-956-2111 पर फोन करें.. कोई व्यक्ति जो हिन्दी बोलता है आपकी मदद कर सकता है.. यह एक मुफ्त सेवा है.

Italian: È disponibile un servizio di interpretariato gratuito per rispondere a eventuali domande sul nostro piano sanitario e farmaceutico. Per un interprete, contattare il numero 1-877-956-2111. Un nostro incaricato che parla Italianovi fornirà l'assistenza necessaria. È un servizio gratuito.

Portuguese: Dispomos de serviços de interpretação gratuitos para responder a qualquer questão que tenha acerca do nosso plano de saúde ou de medicação. Para obter um intérprete, contacte-nos através do número 1-877-956-2111. Irá encontrar alguém que fale o idioma Português para o ajudar. Este serviço é gratuito.

French Creole: Nou genyen sèvis entèprèt gratis pou reponn tout kesyon ou ta genyen konsènan plan medikal oswa dwòg nou an. Pou jwenn yon entèprèt, jis rele nou nan 1-877-956-2111. Yon moun ki pale Kreyòl kapab ede w. Sa a se yon sèvis ki gratis.

Polish: Umożliwiamy bezpłatne skorzystanie z usług tłumacza ustnego, który pomoże w uzyskaniu odpowiedzi na temat planu zdrowotnego lub dawkowania leków. Aby skorzystać z pomocy tłumacza znającego język polski, należy zadzwonić pod numer 1-877-956-2111. Ta usługa jest bezpłatna.

Japanese: 当社の健康 健康保険と薬品 処方薬プランに関するご質問にお答えするために、無料の通訳サービスがありますございます。通訳をご用命になるには、
1-877-956-2111.にお電話ください。日本語を話す人 者が支援いたします。これは無料のサービスです。

Form CMS-10802
(Expires 12/31/25)

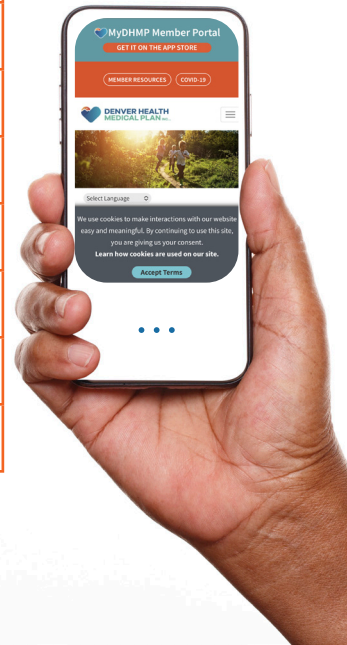


ELEVATE MEDICARE ADVANTAGE

Denver Health Medical Plan Inc.™

IMPORTANT TELEPHONE NUMBERS

Health Plan Services (TTY 711)	303-602-2111
Pharmacy Services	303-602-2070
Access2Care (Transportation)	1-877-692-5315
EyeCare Specialties of Colorado (Vision)	303-802-4650
Denver Health Appointment Center	303-436-4949
Delta Dental of Colorado	1-800-610-0201
DispatchHealth (In-Home Urgent Care)	303-500-1518
24/7 NurseLine	303-739-1261
Department of Human Services	720-944-3666
Social Security	1-800-772-1213
Medicare	1-800-633-4227
Health First Colorado (Medicaid)	1-800-221-3943



*Elevate Medicare Advantage is a Medicare-approved HMO plan.
Enrollment in Elevate Medicare Advantage depends on contract renewal.
The Plan also has a written agreement with the Colorado Medicaid Program
to coordinate your Medicaid benefits.*